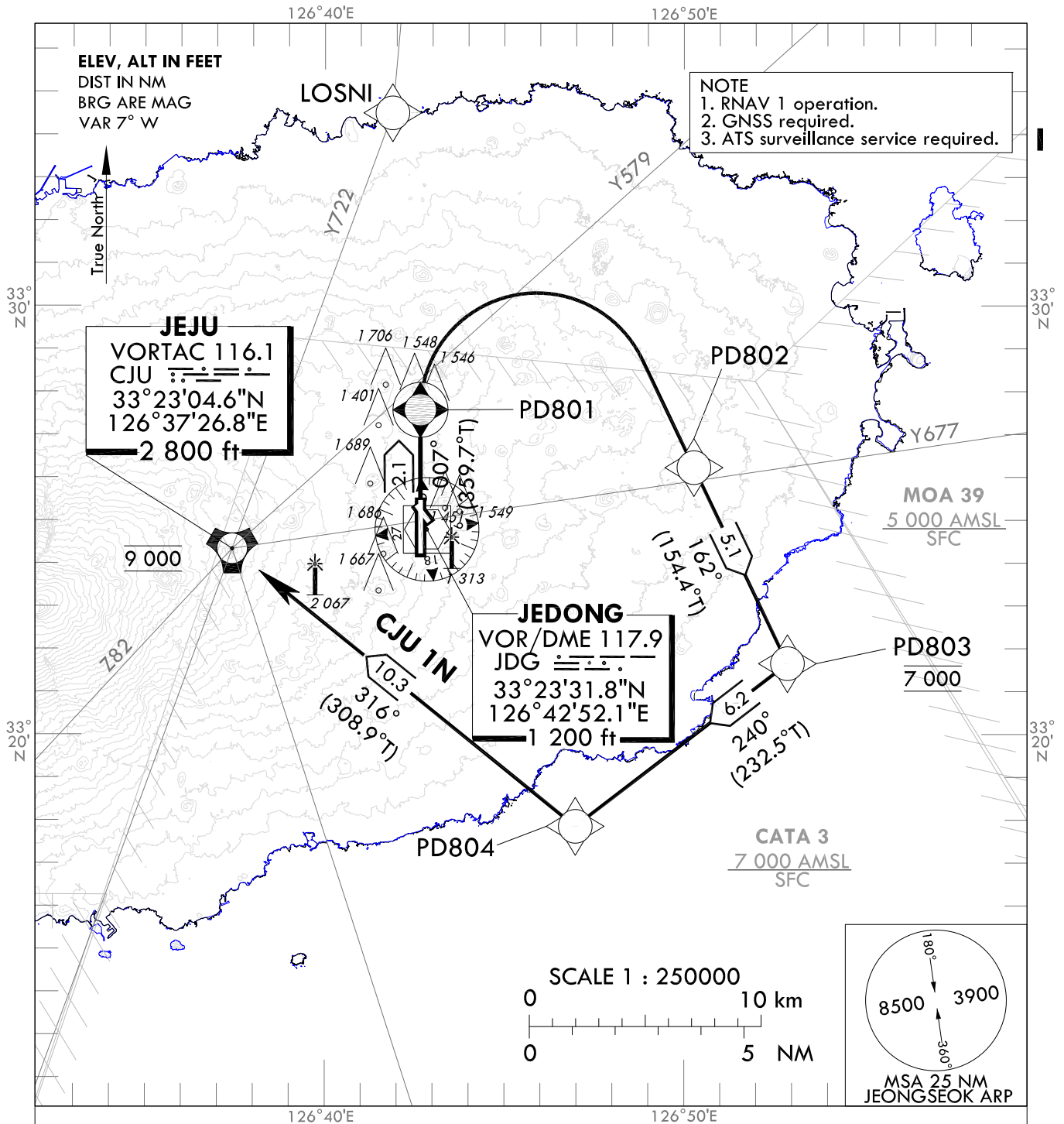


**STANDARD DEPARTURE CHART  
INSTRUMENT (SID) - ICAO**

TRANSITION ALT 14 000  
TRANSITION LVL FL 140

JEJU DEP 119.225  
JEONGSEOK TWR 124.35

**JEJU/Jeongseok(RKPD)**  
**RWY 01**  
**RNAV CJU 1N**



**GENERAL INFORMATION**

1. CJU 1N : 5.8% climb gradient required to 9 000 ft for ATC purpose and avoiding OBST.
2. If unable to comply with flight restrictions or RNAV 1, advise ATC well before departure for alternatives.
3. Departure turn limited to 210 kt IAS maximum until PD804.
4. Within JEJU TMA, maximum 250 kt IAS below 10 000 ft.

**RNAV JEJU ONE NOVEMBER DEPARTURE** : PD801 - PD802 - PD803 - PD804 - CJU

Change : Establishment of NOTE 3.

JEJU/Jeongseok(RKPD)  
RWY 01  
RNAV CJU 1N

## AERONAUTICAL DATA TABULATION

## Standard Instrument Departure Procedure Coding Tables

RNAV CJU 1N

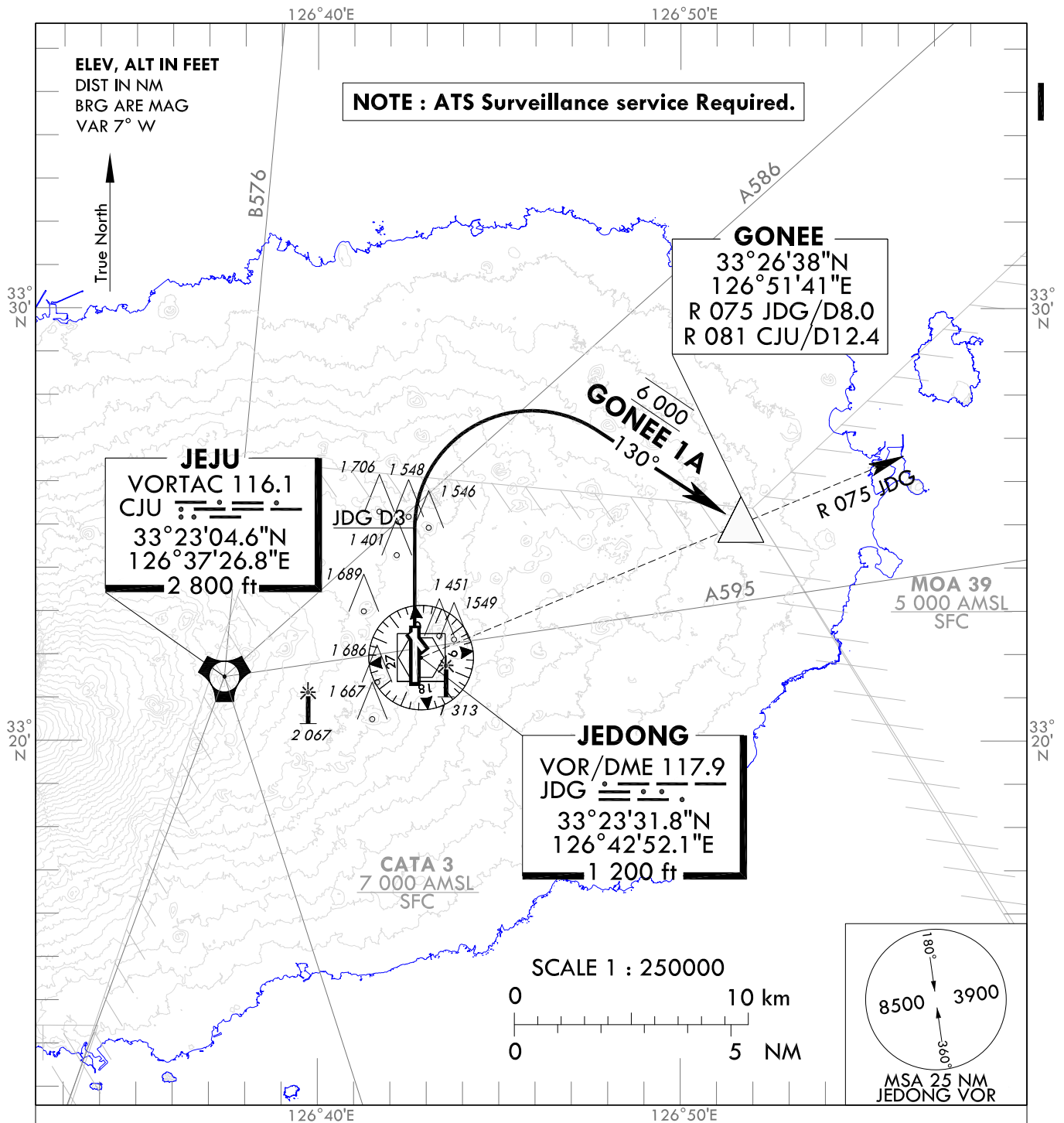
Serial Number	Path Descriptor	Waypoint Identifier	Fly-over	Course/Track °M(°T)	Distance (NM)	Turn direction	Altitude (ft)	Speed (kt)	Coordinates	VPA/TCH	Navigation specification	Remarks
001	CF	PD801	Y	007(359.7)	2.1	-	-	-210	33°26'19.3"N 126°42'40.6"E	-	RNAV 1	-
002	DF	PD802	-	-	-	R	-	-210	33°24'59.1"N 126°50'17.5"E	-	RNAV 1	-
003	TF	PD803	-	162(154.4)	5.1	-	@7 000	-210	33°20'24.7"N 126°52'54.0"E	-	RNAV 1	-
004	TF	PD804	-	240(232.5)	6.2	-	-	-210	33°16'36.5"N 126°47'00.5"E	-	RNAV 1	-
005	TF	PD805	-	316(308.9)	10.3	-	@9 000	-	33°23'04.6"N 126°37'26.8"E	-	RNAV 1	-

STANDARD DEPARTURE CHART  
INSTRUMENT (SID) - ICAO

TRANSITION ALT 14 000  
TRANSITION LVL FL 140

JEJU DEP 119.225  
JEONGSEOK TWR 124.35

JEJU/Jeongseok(RKPD)  
RWY 01  
GONEE 1A



**GENERAL INFORMATION**

1. Minimum climb gradient 7.2% to 6 000 ft for ATC purpose and 5.5% to 2 100 ft for avoiding OBST.
2. If unable to comply with flight restrictions, advise ATC before departure for alternatives.
3. Departure turn limited to 210 kt IAS maximum.
4. Within JEJU TMA, maximum 250 kt IAS below 10 000 ft.

**GONEE ONE ALPHA DEPARTURE**

TAKE OFF RWY 01 : Climb on RWY HDG until JDG D3, turn right HDG 130° to intercept R 075 JDG, proceed to GONEE at 6 000 ft, then as directed by ATC. Maintain 6 000 ft until instructed by ATC.

Change : Information of NOTE(radar → ATS surveillance service).

**INTENTIONALLY**

**LEFT**

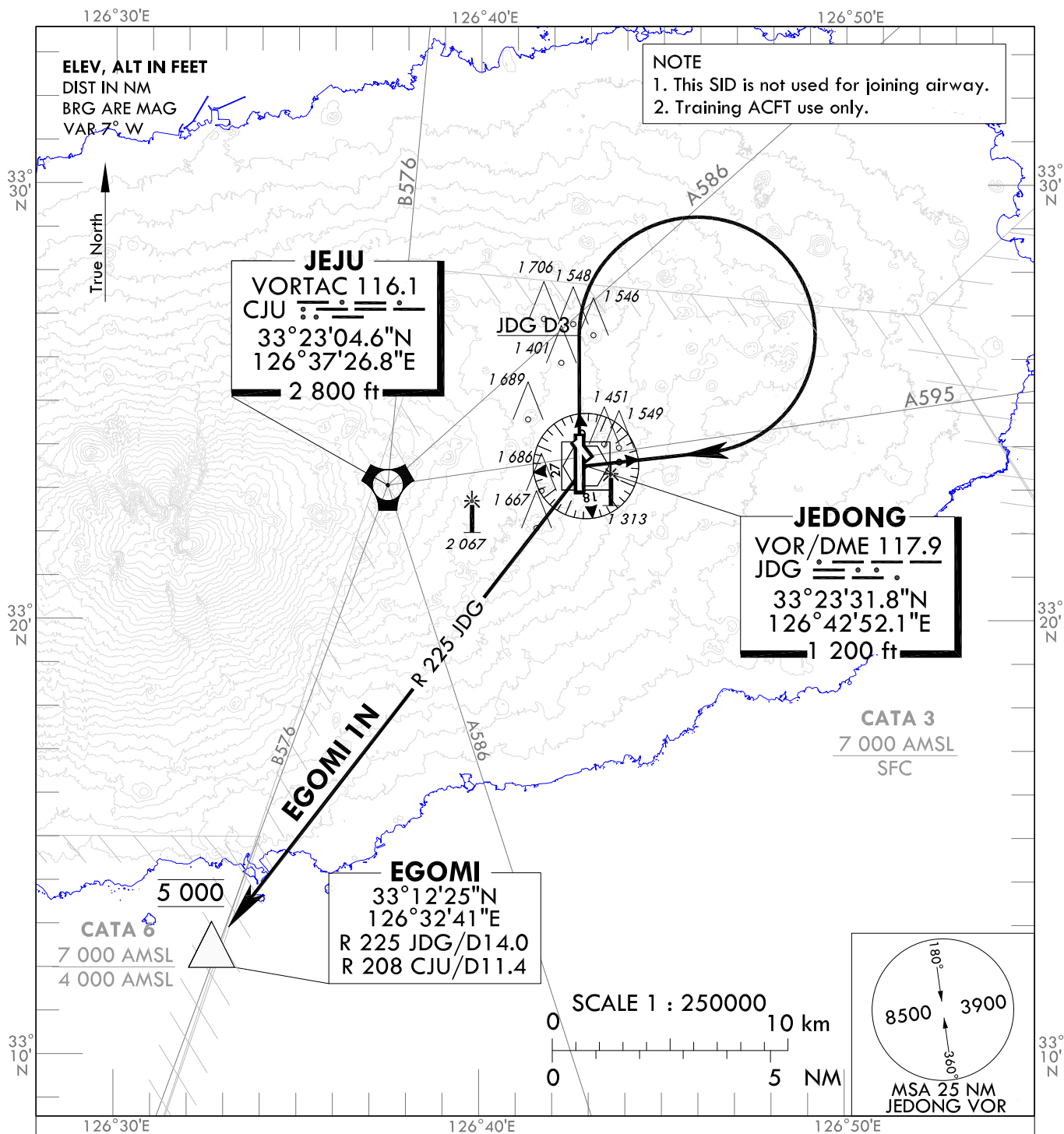
**BLANK**

**STANDARD DEPARTURE CHART  
INSTRUMENT (SID) - ICAO**

TRANSITION ALT 14 000  
TRANSITION LVL FL 140

JEJU DEP 119.225  
JEONGSEOK TWR 124.35

**JEJU/Jeongseok(RKPD)**  
**RWY 01**  
**EGOMI 1N**



**GENERAL INFORMATION**

1. Minimum climb gradient 5.4% required to 5 000 ft for ATC purpose and avoiding OBST.
2. If unable to comply with flight restrictions, advise ATC before departure for alternatives.
3. Departure turn limited to 210 kt IAS maximum.
4. Within JEJU TMA, maximum 250 kt IAS below 10 000 ft.

**EGOMI ONE NOVEMBER DEPARTURE**

TAKE OFF RWY 01 : Climb on RWY HDG until JDG D3, turn right direct to JDG, then proceed on R 225 JDG to EGOMI at 5 000 ft, then as directed by ATC. Maintain 5 000 ft until instructed by ATC.

Change : Information of standard instrument departure procedure for RWY 01.

**INTENTIONALLY**

**LEFT**

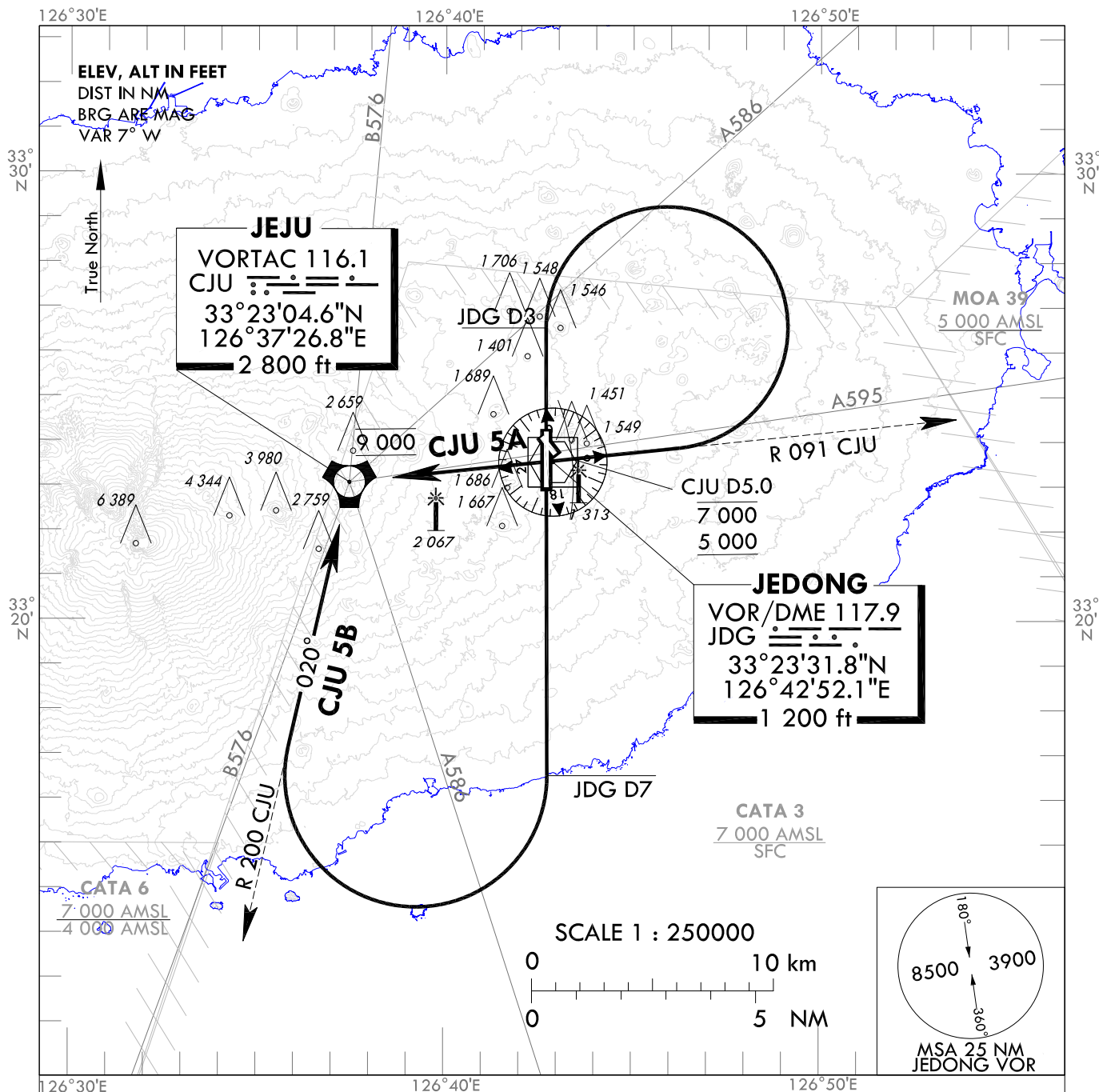
**BLANK**

**STANDARD DEPARTURE CHART  
INSTRUMENT (SID) - ICAO**

TRANSITION ALT 14 000  
TRANSITION LVL FL 140

JEJU DEP 119.225  
JEONGSEOK TWR 124.35

**JEJU/Jeongseok(RKPD)**  
**RWY 01 CJU 5A**  
**RWY 19 CJU 5B**



**GENERAL INFORMATION**

1. CJU 5A : 7.9% climb gradient required to 9 000 ft for ATC purpose and 5.4% to 2 700 ft for avoiding OBST.
2. CJU 5B : 6.5% climb gradient required to 9 000 ft for ATC purpose and 5.4% to 5 300 ft for avoidong OBST.
3. If unable to comply with flight restrictions, advise ATC before departure for alternatives.
4. Departure turn limited to 210 kt IAS maximum.
5. Within JEJU TMA, maximum 250 kt IAS below 10 000 ft.

**JEJU FIVE ALPHA DEPARTURE**

TAKE OFF RWY 01 : Climb on RWY HDG until JDG D3, turn right to intercept R 091 CJU, then proceed to CJU.  
Cross R 091/D5.0 CJU between 5 000 ft and 7 000 ft, CJU at 9 000 ft.  
Maintain 9 000 ft until instructed by ATC.

**JEJU FIVE BRAVO DEPARTURE**

TAKE OFF RWY 19 : Climb on RWY HDG until JDG D7, turn right to intercept R 200 CJU,  
then proceed to CJU at 9 000 ft. Maintain 9 000 ft until instructed by ATC.

Change : Information of standard instrument departure procedure for RWY 01 and RWY 19.

**INTENTIONALLY**

**LEFT**

**BLANK**

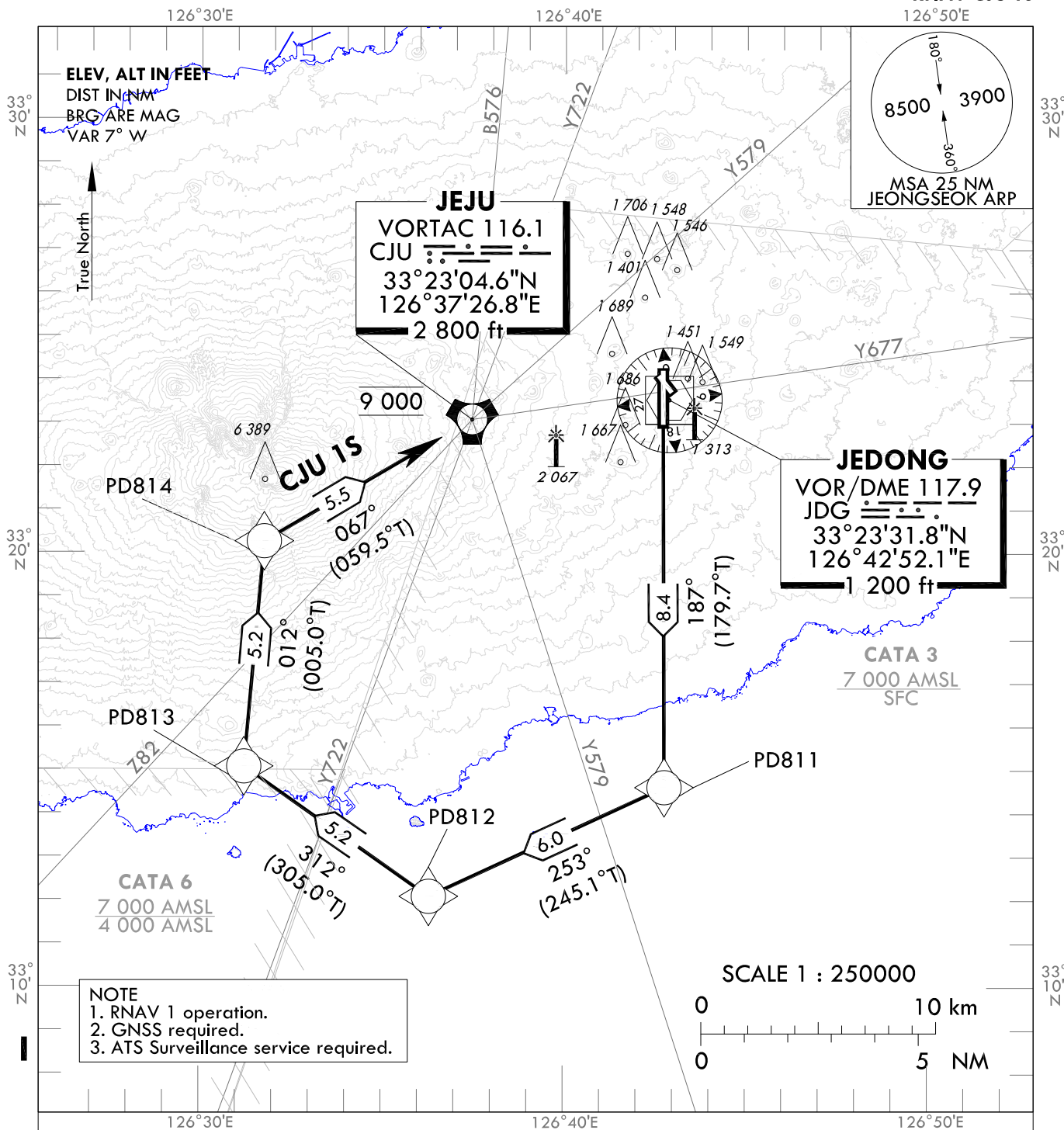


# STANDARD DEPARTURE CHART INSTRUMENT (SID) - ICAO

TRANSITION ALT 14 000  
TRANSITION LVL FL 140

JEJU	DEP	119.225
JEONGSEOK	TWR	124.35

**JEJU/Jeongseok(RKPD)**  
**RWY 19**  
**RNAV CJU 1S**



## GENERAL INFORMATION

1. CJU 1S : 5.9% climb gradient required to 9 000 ft for ATC purpose and avoiding OBST.
2. If unable to comply with flight restrictions or RNAV 1, advise ATC before departure for alternatives.
3. Departure turn limited to 210 kt IAS maximum until PD814.
4. Within JEJU TMA, maximum 250 kt IAS below 10 000 ft.

**RNAV JEJU ONE SIERRA DEPARTURE : PD811 - PD812 - PD813 - PD814 - CJU**

JEJU/Jeongseok(RKPD)  
RWY 19  
RNAV CJU 1S

## AERONAUTICAL DATA TABULATION

## Standard Instrument Arrival Procedure Coding Tables

## RNAV CJU 1S

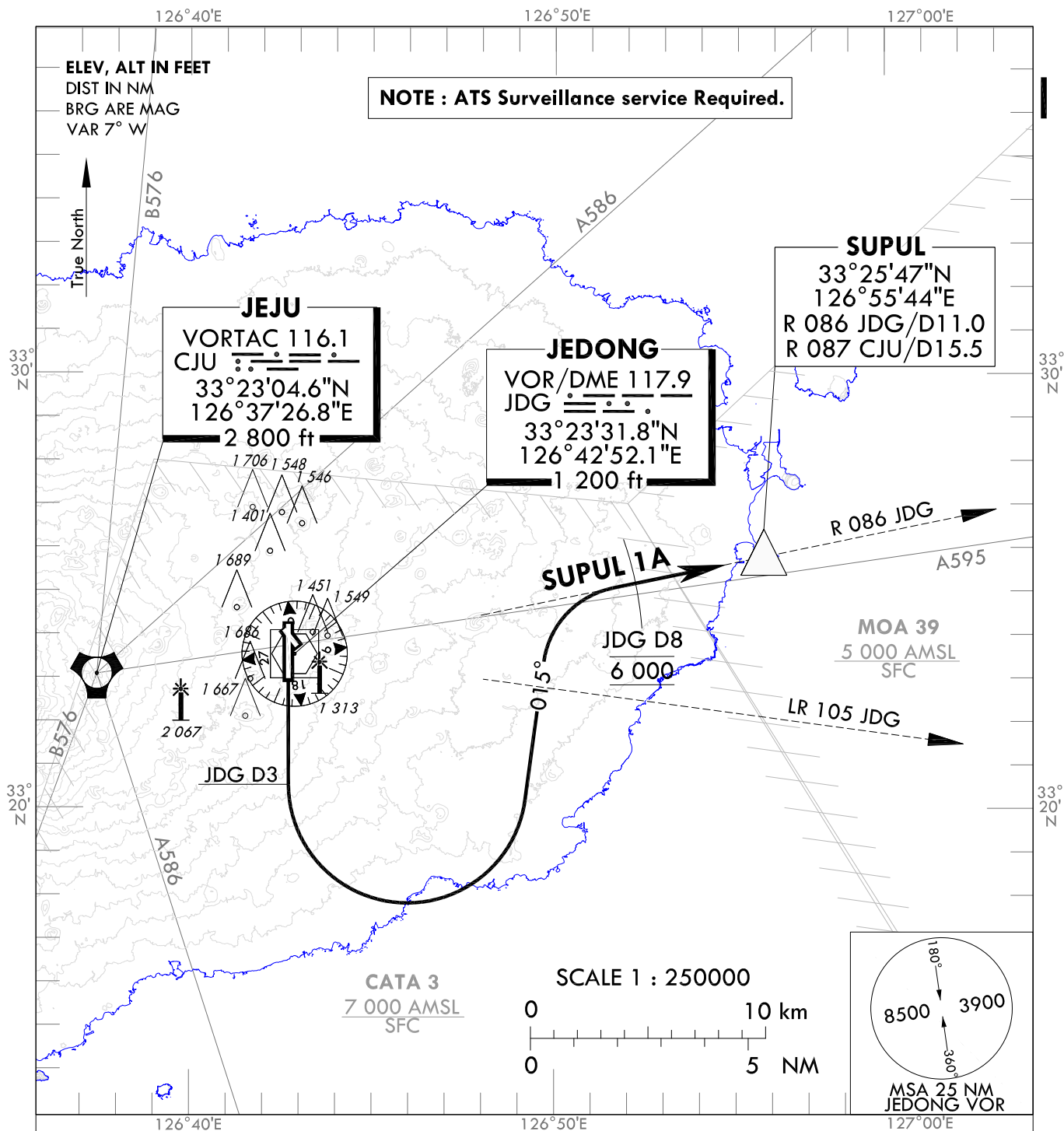
Serial Number	Path Descriptor	Waypoint Identifier	Fly-over	Course/Track °M(°T)	Distance (NM)	Turn direction	Altitude (ft)	Speed (kt)	Coordinates	VPA/TCH	Navigation specification	Remarks
001	CF	PD811	-	187(179.7)	8.4	-	-	-210	33°14'36.2"N 126°42'44.6"E	-	RNAV 1	-
002	TF	PD812	-	253(245.1)	6.0	-	-	-210	33°12'05.0"N 126°36'17.4"E	-	RNAV 1	-
003	TF	PD813	-	312(305.0)	5.2	-	-	-210	33°15'04.4"N 126°31'12.8"E	-	RNAV 1	-
004	TF	PD814	-	012(005.0)	5.2	-	-	-210	33°20'15.8"N 126°31'45.3"E	-	RNAV 1	-
005	TF	CJU	-	067(059.5)	5.5	-	@9 000	-	33°23'04.6"N 126°37'26.8"E	-	RNAV 1	-

STANDARD DEPARTURE CHART  
INSTRUMENT (SID) - ICAO

TRANSITION ALT 14 000  
TRANSITION LVL FL 140

JEJU DEP 119.225  
JEONGSEOK TWR 124.35

JEJU/Jeongseok(RKPD)  
RWY 19  
SUPUL 1A



**GENERAL INFORMATION**

1. Minimum climb gradient 6.3% to 6 000 ft for ATC purpose and avoiding OBST.
2. If unable to comply with restrictions, advise ATC before departure for alternatives.
3. Departure turn limited to 210 kt IAS maximum.
4. Within JEJU TMA, maximum 250 kt IAS below 10 000 ft.

**SUPUL ONE ALPHA DEPARTURE**

TAKE OFF RWY 19 : Climb on RWY HDG until JDG D3, turn left HDG 015° to intercept R 086 JDG.  
Proceed to SUPUL at 6 000 ft, then as directed by ATC.  
Reach at 6 000 ft until passing JDG D8. Maintain 6 000 ft until instructed by ATC.

Change : Information of NOTE(radar → ATS surveillance service).

**INTENTIONALLY**

**LEFT**

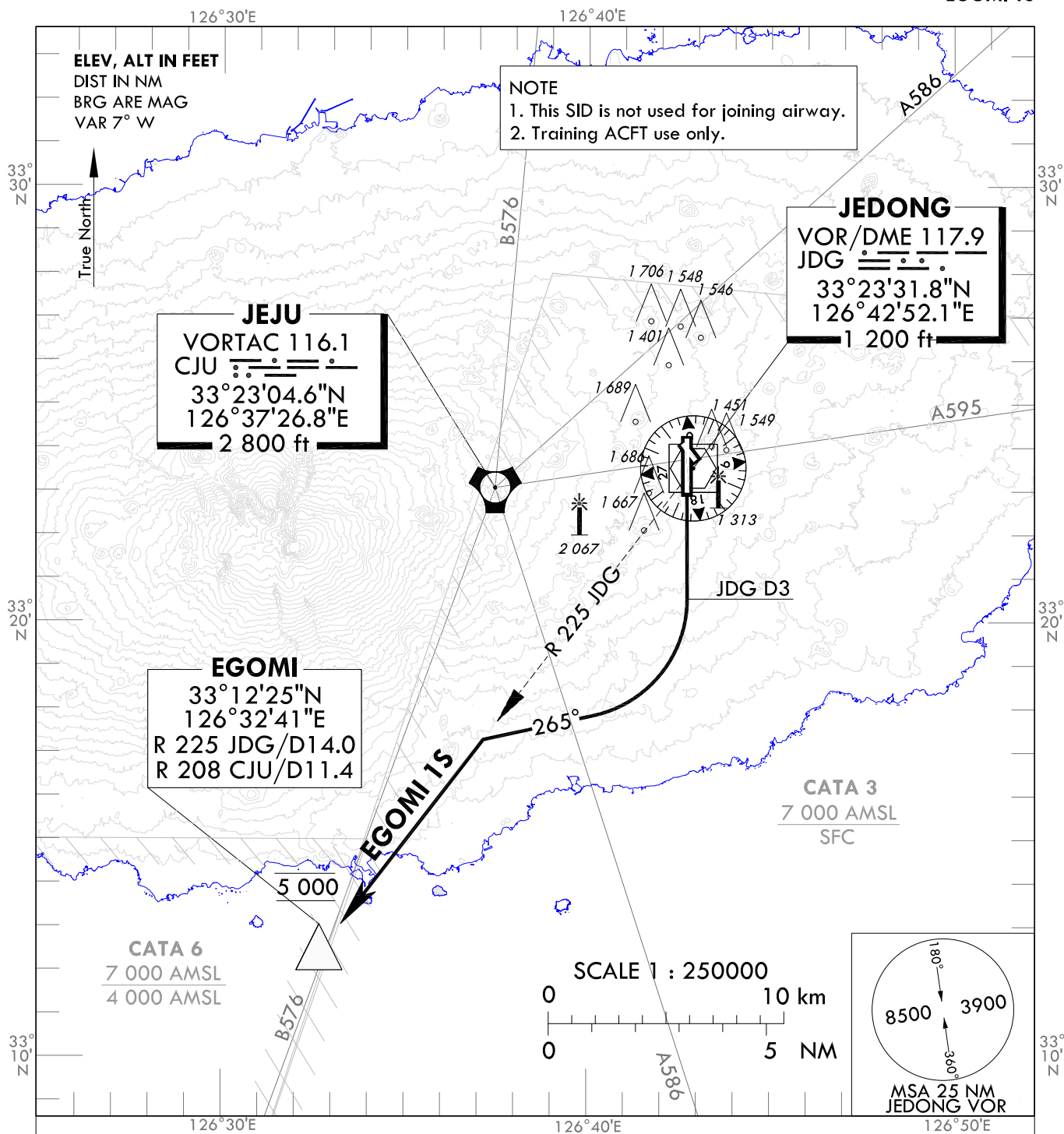
**BLANK**

**STANDARD DEPARTURE CHART  
INSTRUMENT (SID) - ICAO**

TRANSITION ALT 14 000  
TRANSITION LVL FL 140

JEJU DEP 119.225  
JEONGSEOK TWR 124.35

**JEJU/Jeongseok(RKPD)**  
**RWY 19**  
**EGOMI 1S**



**GENERAL INFORMATION**

1. Minimum climb gradient 4.5% required to 5 000 ft for ATC purpose and avoiding OBST.
2. If unable to comply with flight restrictions, advise ATC before departure for alternatives.
3. Departure turn limited to 210 kt IAS maximum.
4. Within JEJU TMA, maximum 250 kt IAS below 10 000 ft.

**EGOMI ONE SIERRA DEPARTURE**

TAKE OFF RWY 19 : Climb on RWY HDG until JDG D3, turn right HDG 265° to intercept R 225 JDG, then proceed to EGOMI at 5 000 ft, then as directed by ATC.  
Maintain 5 000 ft until instructed by ATC.

Change : Information of standard instrument departure procedure for RWY 19.

**INTENTIONALLY**

**LEFT**

**BLANK**